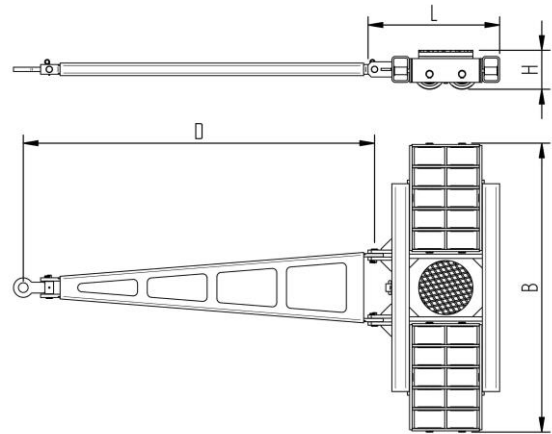


Fact sheet **ECO-Skate** XN50L

Load moving system, steerable, 3-load points

HTS



Specification:

Heavy-duty load moving system for the professional indoor heavy load transport on clean, smooth and level floors, incl. pulling bar with grab handle or pulling eye, turntable with anti slip rubber pad and high-quality HTS nylon wheels, which are abrasion-resistant and non-marking and suitable for all smooth and level floors. In combination with an S or DUO skate system or, if applicable, two ROTO skates with the same installation height it forms a secure overall system with 3 load points.

Technical data of load moving system:

# 10 500 03 10	Ø 9.8 in	0.5 x 3.1 = 1.5 in ² ▼ 3825 psi
MAT NY, 80 Shore D	L x B x H 23.9 x 52.6 x 7.1 in	29.4 in ²
110230 lb	D = 63.8 in	2810 lbf*
# 20	472 lb	2248 lbf*

Equipped with the following wheel:

# 11 140 10 25	0.5 x 3.1 = 1.5 in ² ▼ 3825 psi
MAT NY, 80 Shore D	5512 lb
Ø5.5x3.3 - Ø1.2 in	1.25 MPH V _{max} = 1.25 mph



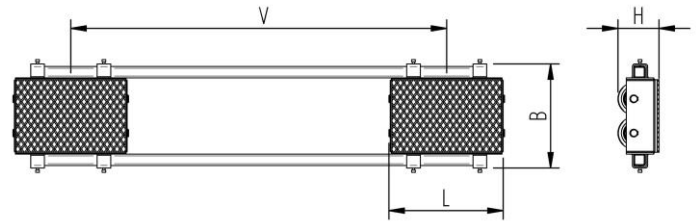
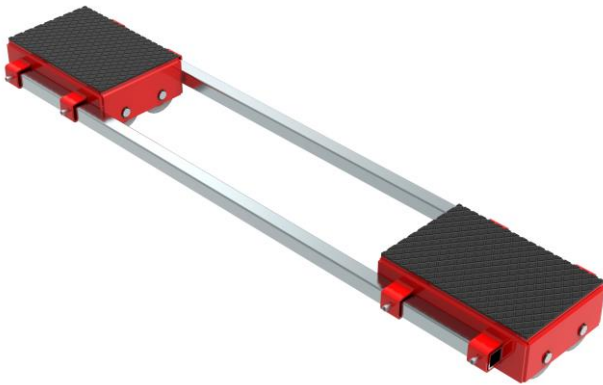
Please always observe the operating instructions, their safety instructions and local conditions!

# Part No.	# Number of wheels	Ø Load Area in inch	0.5 Area inch ² of the roller surface pressure ▼ psi	→ Traction* in lbf, required force to move the load at a steady speed of 1.25 mph under ideal conditions
MAT Wheel material layer, core: AL Aluminium, NY Nylon PU Polyurethane, ST Steel	Ø Dimensions of wheel, inside ball bearing diameter inch	↕ Dimensions in inch L x B x H	→ Loaded area per skate in inch ²	
Carrying Capacity of load moving skate in lb at 1.25 mph max.	Weight lb	↔ Steering bar length D for L, adjustability V for S and DUO skate systems	→ Starting resistance* in lbf, required force to start moving, under ideal conditions	* Varies depending on the tolerances of the floor and ambient situation. All information without guarantee.

Fact sheet **ECO-Skate** XN50S

Load moving system, rear, 3-/4- load points

HTS



Specification:

Heavy-duty load moving system for the professional indoor heavy load transport on clean, smooth and level floors. Design incl. alignment bars, anti-slip rubber pad and high-quality HTS nylon wheels, which are abrasion-resistant and non-marking and suitable for all smooth and level floors. In combination with an L or ROTO Skate system with the same installation height it forms a safe overall system with 3 load points. For a DUO or two ROTO skates, observe the operating instructions for 4-point supports.

Technical data of load moving system:

# 10 500 03 20	12.5 x 18.9 in	0.5 x 3.1 = 1.5 in ² ▼ 3825 psi
MAT NY, 80 Shore D	L x B x H 18.0 x 20.0 x 7.1 in	29.4 in ²
2 x 55115 lb	V = 21.7 - 65.0 in	2810 lbf*
# 2 x 10	384 lb	2248 lbf*

Equipped with the following wheel:

# 11 140 10 25	0.5 x 3.1 = 1.5 in ² ▼ 3825 psi
MAT NY, 80 Shore D	5512 lb
Ø5.5x3.3 - Ø1.2 in	1.25 MPH V _{max} = 1.25 mph



Please always observe the operating instructions, their safety instructions and local conditions!

# Part No.	# Number of wheels	Load Area in inch	Area inch ² of the roller surface pressure ▼ psi	Traction* in lbf, required force to move the load at a steady speed of 1.25 mph under ideal conditions
MAT Wheel material layer, core: AL Aluminium, NY Nylon PU Polyurethane, ST Steel	Dimensions of wheel, inside ball bearing diameter inch	Dimensions in inch L x B x H	Loaded area per skate in inch ²	
Carrying Capacity of load moving skate in lb at 1.25 mph max.	Weight lb	Steering bar length D for L, adjustability V for S and DUO skate systems	Starting resistance* in lbf, required force to start moving, under ideal conditions	* Varies depending on the tolerances of the floor and ambient situation. All information without guarantee.