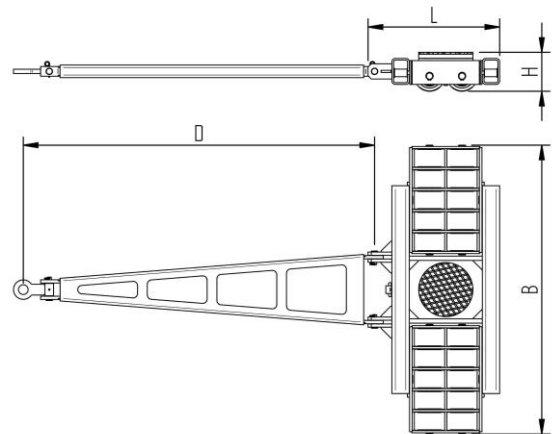
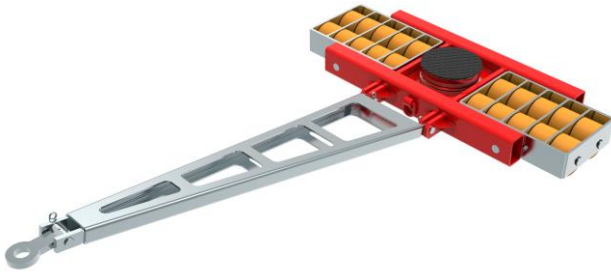


Fact sheet **ECO-Skate** X40L

Load moving system, steerable, 3-load points

HTS



Specification:

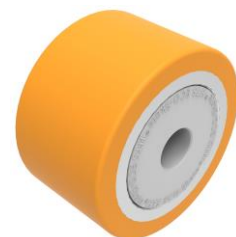
Heavy-duty load moving system for the professional indoor heavy load transport on clean, smooth and level floors, incl. pulling bar with grab handle or pulling eye, turntable with anti-slip rubber pad and high-quality HTS 3-component polyurethane wheels, which are abrasion-resistant, cut-resistant and non-marking as well as suitable for smooth and level floors with slight unevenness. In combination with an S or DUO load moving system with the same installation height, it forms a secure overall system with 3 load points.

Technical data of load moving system:

# 10 400 02 10	Ø 9.8 in	0.8 x 3.1 = 2.3 in ² ▼ 1890 psi
MAT PU, AL, 93 Shore A	L x B x H 23.9 x 52.6 x 7.1 in	46.7 in ²
88184 lb	D = 63.8 in	4496 lbf*
# 20	507 lb	2698 lbf*

Equipped with the following wheel:

# 11 140 20 25	0.8 x 3.1 = 2.3 in ² ▼ 1890 psi
MAT PU, AL, 93 Shore A	4409 lb
Ø5.5x3.3 - Ø1.2 in	1.25 MPH V _{max} = 1.25 mph



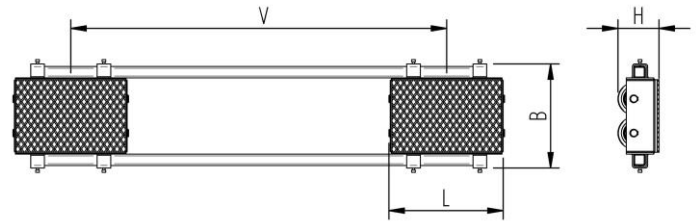
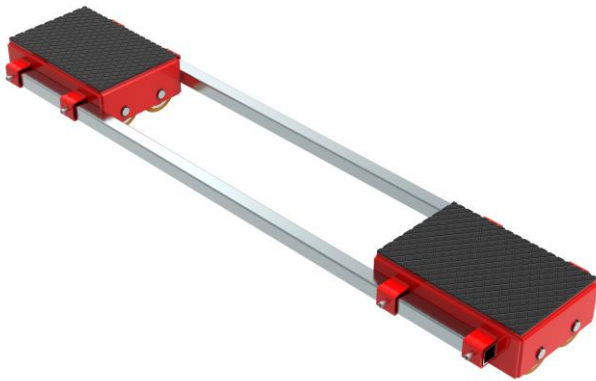
Please always observe the operating instructions, their safety instructions and local conditions!

# Part No.	# Number of wheels	Ø Load Area in inch	Ø Area inch ² of the roller surface pressure ▼ psi	→ Traction* in lbf, required force to move the load at a steady speed of 1.25 mph under ideal conditions
MAT Wheel material layer, core: AL Aluminium, NY Nylon PU Polyurethane, ST Steel	Ø Dimensions of wheel, inside ball bearing diameter inch	↕ Dimensions in inch L x B x H	↕ Loaded area per skate in inch ²	→ Starting resistance* in lbf, required force to start moving, under ideal conditions
Carrying Capacity of load moving skate in lb at 1.25 mph max.	Weight lb	↕ Steering bar length D for L, adjustability V for S and DUO skate systems		* Varies depending on the tolerances of the floor and ambient situation. All information without guarantee.

Fact sheet **ECO-Skate** X40S

Load moving system, rear, 3-/4- load points

HTS



Specification:

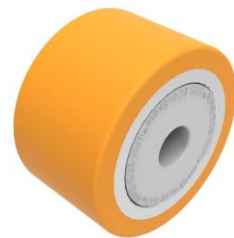
Heavy-duty load moving system for the professional indoor heavy load transport on clean, smooth and level floors, incl. alignment bars, anti-slip rubber pad and high-quality HTS 3-component polyurethane wheels, which are abrasion-resistant, cut-resistant and non-marking and suitable for all smooth and level floors with slight unevenness. In combination with an L load moving skate with the same installation height it forms a safe overall system with 3 load points. For a DUO system, please observe the operating instructions for 4-point supports.

Technical data of load moving system:

# 10 400 02 20	12.5 x 18.9 in	0.8 x 3.1 = 2.3 in ² ▼ 1890 psi
MAT PU, AL, 93 Shore A	L x B x H 18.0 x 20.0 x 7.1 in	46.7 in ²
2 x 44092 lb	V = 21.7 - 65.0 in	4496 lbf*
# 2 x 10	423 lb	2698 lbf*

Equipped with the following wheel:

# 11 140 20 25	0.8 x 3.1 = 2.3 in ² ▼ 1890 psi
MAT PU, AL, 93 Shore A	4409 lb
Ø5.5x3.3 - Ø1.2 in	1.25 MPH V _{max} = 1.25 mph



Please always observe the operating instructions, their safety instructions and local conditions!

# Part No.	# Number of wheels	Load Area in inch	Area inch ² of the roller surface pressure ▼ psi	Traction* in lbf, required force to move the load at a steady speed of 1.25 mph under ideal conditions
MAT Wheel material layer, core: AL Aluminium, NY Nylon PU Polyurethane, ST Steel	Dimensions of wheel, inside ball bearing diameter inch	Dimensions in inch L x B x H	Loaded area per skate in inch ²	
Carrying Capacity of load moving skate in lb at 1.25 mph max.	Weight lb	Steering bar length D for L, adjustability V for S and DUO skate systems	Starting resistance* in lbf, required force to start moving, under ideal conditions	* Varies depending on the tolerances of the floor and ambient situation. All information without guarantee.