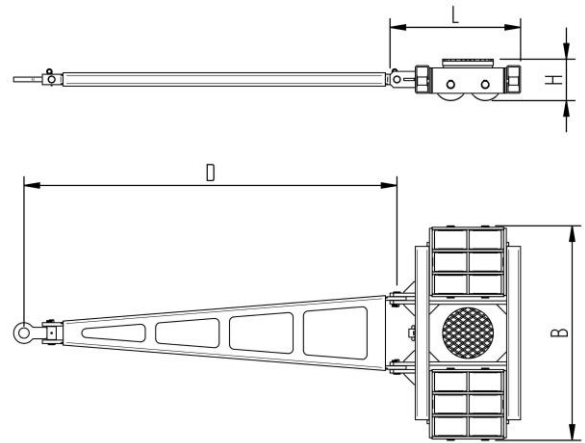
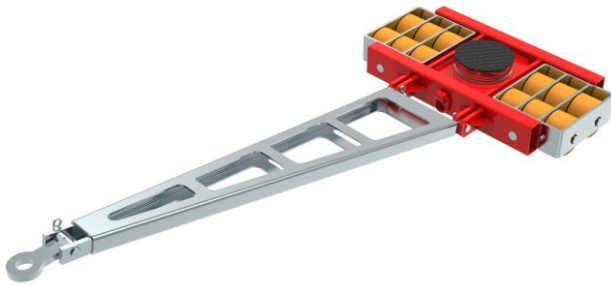


Fact sheet **ECO-Skate** X24L

Load moving system, steerable, 3-load points

HTS



Specification:

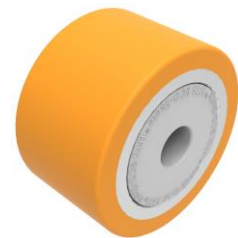
Heavy-duty load moving system for the professional indoor heavy load transport on clean, smooth and level floors, incl. pulling bar with grab handle or pulling eye, turntable with anti-slip rubber pad and high-quality HTS 3-component polyurethane wheels, which are abrasion-resistant, cut-resistant and non-marking as well as suitable for smooth and level floors with slight unevenness. In combination with an S or DUO load moving system with the same installation height, it forms a secure overall system with 3 load points.

Technical data of load moving system:

# 10 240 02 10	Ø 8.7 in	0.8 x 3.1 = 2.3 in ² ▼ 1890 psi
MAT PU, AL, 93 Shore A	L x B x H 22.3 x 36.7 x 7.1 in	28.0 in ²
52910 lb	D = 63.8 in	2698 lbf*
# 12	348 lb	1619 lbf*

Equipped with the following wheel:

# 11 140 20 25	0.8 x 3.1 = 2.3 in ² ▼ 1890 psi
MAT PU, AL, 93 Shore A	4409 lb
Ø5.5x3.3 - Ø1.2 in	1.25 MPH V _{max} = 1.25 mph



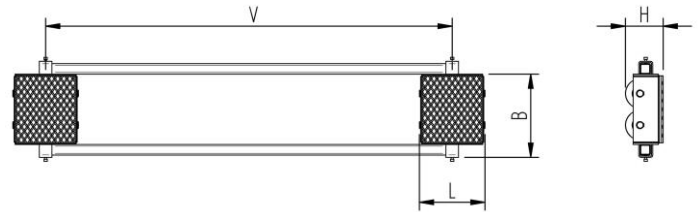
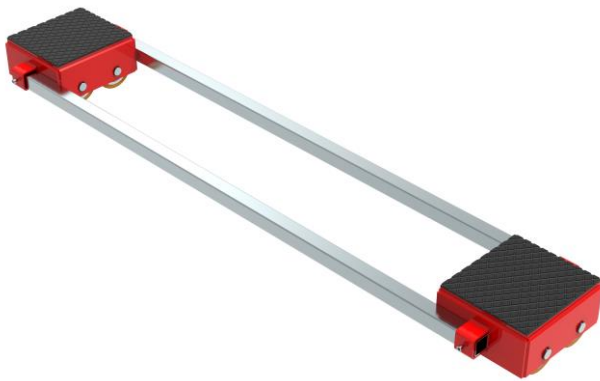
Please always observe the operating instructions, their safety instructions and local conditions!

# Part No.	# Number of wheels	Ø Load Area in inch	Ø Area inch ² of the roller surface pressure ▼ psi	→ Traction* in lbf, required force to move the load at a steady speed of 1.25 mph under ideal conditions
MAT Wheel material layer, core: AL Aluminium, NY Nylon PU Polyurethane, ST Steel	Ø Dimensions of wheel, inside ball bearing diameter inch	→ Dimensions in inch L x B x H	→ Loaded area per skate in inch ²	→ Starting resistance* in lbf, required force to start moving, under ideal conditions
→ Carrying Capacity of load moving skate in lb at 1.25 mph max.	→ Weight lb	→ Steering bar length D for L, adjustability V for S and DUO skate systems		* Varies depending on the tolerances of the floor and ambient situation. All information without guarantee.

Fact sheet **ECO-Skate** X24S

Load moving system, rear, 3-/4- load points

HTS



Specification:

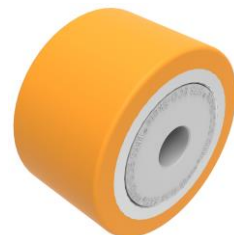
Heavy-duty load moving system for the professional indoor heavy load transport on clean, smooth and level floors, incl. alignment bars, anti-slip rubber pad and high-quality HTS 3-component polyurethane wheels, which are abrasion-resistant, cut-resistant and non-marking and suitable for all smooth and level floors with slight unevenness. In combination with an L load moving skate with the same installation height it forms a safe overall system with 3 load points. For a DUO system, please observe the operating instructions for 4-point supports.

Technical data of load moving system:

# 10 240 02 20	12.5 x 11.2 in	0.8 x 3.1 = 2.3 in ² ▼ 1890 psi
MAT PU, AL, 93 Shore A	L x B x H 18.0 x 12.3 x 7.1 in	28.0 in ²
2 x 26455 lb	V = 12.6 - 76.4 in	2698 lbf*
2 x 6	262 lb	1619 lbf*

Equipped with the following wheel:

# 11 140 20 25	0.8 x 3.1 = 2.3 in ² ▼ 1890 psi
MAT PU, AL, 93 Shore A	4409 lb
Ø5.5x3.3 - Ø1.2 in	1.25 MPH V _{max} = 1.25 mph



Please always observe the operating instructions, their safety instructions and local conditions!

# Part No.	# Number of wheels	Load Area in inch	Area inch ² of the roller surface pressure ▼ psi	Traction* in lbf, required force to move the load at a steady speed of 1.25 mph under ideal conditions
MAT Wheel material layer, core: AL Aluminium, NY Nylon PU Polyurethane, ST Steel	Dimensions of wheel, inside ball bearing diameter inch	Dimensions in inch L x B x H	Loaded area per skate in inch ²	
Carrying Capacity of load moving skate in lb at 1.25 mph max.	Weight lb	Steering bar length D for L, adjustability V for S and DUO skate systems	Starting resistance* in lbf, required force to start moving, under ideal conditions	* Varies depending on the tolerances of the floor and ambient situation. All information without guarantee.