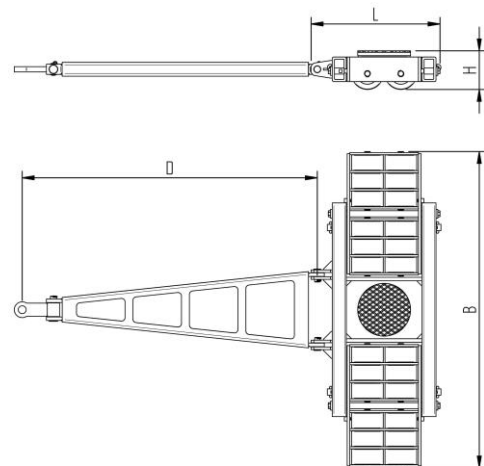


# Fact sheet **ECO-Skate** BIG66L

Load moving system, steerable, 3-load points

# HTS



## Specification:

Heavy-duty load moving system for the professional indoor heavy load transport on clean, smooth and level floors, incl. pulling bar with grab handle or pulling eye, turntable with anti-slip rubber pad and high-quality HTS 3-component polyurethane wheels, which are abrasion-resistant, cut-resistant and non-marking as well as suitable for smooth and level floors with slight unevenness. In combination with an S or DUO load moving system with the same installation height, it forms a secure overall system with 3 load points.

## Technical data of load moving system:

|                        |                                  |  |
|------------------------|----------------------------------|--|
| # 09 066 04 10         | Ø 300 mm                         | 19,3 x 84 = 1622 mm <sup>2</sup><br>▼ 14,6 MPa |
| MAT PU, AL, 93 Shore A | L x B x H<br>738 x 1802 x 220 mm | 389,2 cm <sup>2</sup>                          |
| 66000 daN              | D = 1775 mm                      | 3300 daN*                                      |
| # 24                   | 489 kg                           | 1980 daN*                                      |

## Equipped with the following wheel:

|                        |  |
|------------------------|--|
| # 11 180 20 25         | 19,3 x 84 = 1622 mm <sup>2</sup><br>▼ 14,6 MPa |
| MAT PU, AL, 93 Shore A | 2750 daN                                       |
| Ø180x89 - Ø30 mm       | V <sub>max</sub> = 2 km/h                      |



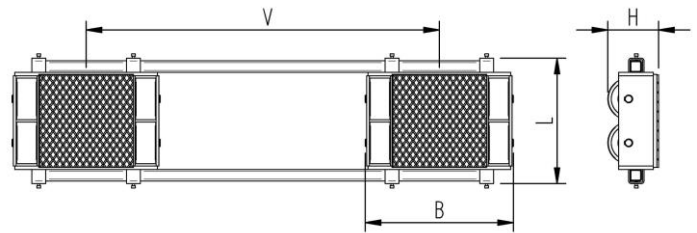
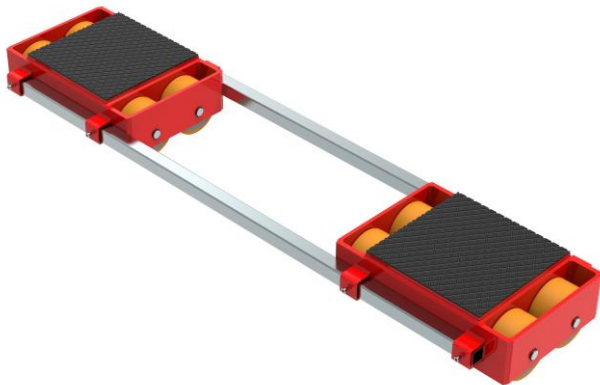
**Please always observe the operating instructions, their safety instructions and local conditions!**

|  |  |  |   |   |
|--|--|--|---|---|
| # Part No.   | # Number of wheels                                     | Ø Load Area in mm  | Ø Area mm <sup>2</sup> of the roller surface pressure ▼ N / mm <sup>2</sup>           | → Traction* in daN, required force to move the load at a steady speed of 2 km/h under ideal conditions      |
| MAT Wheel material layer, core: AL Aluminium, NY Nylon PU Polyurethane, ST Steel | Ø Dimensions of wheel, inside ball bearing diameter mm | ↕ Dimensions in mm L x B x H   | → Loaded area per skate in cm <sup>2</sup>  |   |
| → Carrying Capacity of load moving skate in daN at 2km/h max.                    | → Weight kg  | ↔ Steering bar length D for L, adjustability V for S and DUO skate systems | → Starting resistance* in daN, required force to start moving, under ideal conditions | * Varies depending on the tolerances of the floor and ambient situation. All information without guarantee. |

# Fact sheet **ECO-Skate** BIG66S

Load moving system, rear, 3-/4- load points

# HTS



## Specification:

Heavy-duty load moving system for the professional indoor heavy load transport on clean, smooth and level floors, incl. alignment bars, anti-slip rubber pad and high-quality HTS 3-component polyurethane wheels, which are abrasion-resistant, cut-resistant and non-marking and suitable for all smooth and level floors with slight unevenness. In combination with an L load moving skate with the same installation height it forms a safe overall system with 3 load points. For a DUO system, please observe the operating instructions for 4-point supports.

## Technical data of load moving system:

|                        |                                 |  |
|------------------------|---------------------------------|--|
| # 09 066 04 20         | 400 x 406 mm                    | 19,3 x 84 = 1622 mm <sup>2</sup><br>▼ 14,6 MPa |
| MAT PU, AL, 93 Shore A | L x B x H<br>542 x 642 x 220 mm | 389,2 cm <sup>2</sup>                          |
| 2 x 33000 daN          | V = 642 - 1530 mm               | 3300 daN*                                      |
| 2 x 12                 | 326 kg                          | 1980 daN*                                      |

## Equipped with the following wheel:

|                        |  |
|------------------------|--|
| # 11 180 20 25         | 19,3 x 84 = 1622 mm <sup>2</sup><br>▼ 14,6 MPa |
| MAT PU, AL, 93 Shore A | 2750 daN                                       |
| Ø180x89 - Ø30 mm       | V <sub>max</sub> = 2 km/h                      |



**Please always observe the operating instructions, their safety instructions and local conditions!**

|  |  |  |   |   |
|--|--|--|---|---|
| # Part No.   | # Number of wheels                                   | Load Area in mm  | Area mm <sup>2</sup> of the roller surface pressure ▼ N / mm <sup>2</sup>           | Traction* in daN, required force to move the load at a steady speed of 2 km/h under ideal conditions        |
| MAT Wheel material layer, core: AL Aluminium, NY Nylon PU Polyurethane, ST Steel | Dimensions of wheel, inside ball bearing diameter mm | Dimensions in mm L x B x H   | Loaded area per skate in cm <sup>2</sup>  |   |
| Carrying Capacity of load moving skate in daN at 2km/h max.                      | Weight kg  | Steering bar length D for L, adjustability V for S and DUO skate systems | Starting resistance* in daN, required force to start moving, under ideal conditions | * Varies depending on the tolerances of the floor and ambient situation. All information without guarantee. |