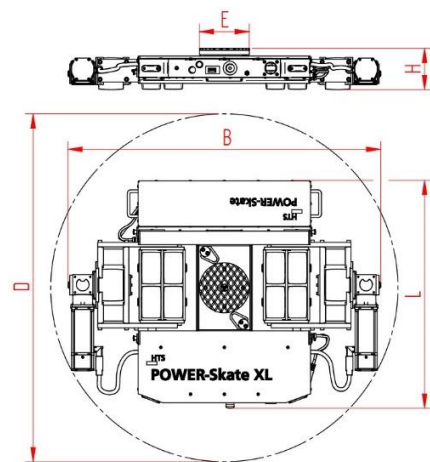


POWER-Skate® XL PSX 20-40 DUO

Load Moving Skate, radio-controlled, 3-/4-point support

HTS



Description:

Two interlinked, battery-operated, radio remote-controlled heavy-duty load moving skates for professional, in-house transport of heavy goods on clean and even floor. With the single-joystick remote control every movement is proportionally and exactly executed. Single operation possible at any time. Equipped with LiFePo4 battery, radio control, chargers, turn table with an anti-slip pad, high-quality HTS nylon load wheels and polyurethane traction wheels. They are abrasion-resistant, non-marking and cut-resistant as well as suitable for all smooth floors. Combined with one or two non-bolted ROTOflex skates of the same height these DUO-skates form a safe overall with 3-/4-point load moving system. The capacity of the skates has to correspond to the load of the POWER-Skates.

Technical data skate:

# 10.204.55.30	L x B x H 1003 x 1380 x 180 mm	E Ø220 mm
251 kg (2x)	20000 daN	40000 daN
D 1545 mm	4 h / 4,5 h	2,4 GHz
$V_{max} = 0,5 \text{ km/h}$	$\mu \geq 0,3$	according to DIN 18202 table 3, line 3

Technical data load wheel:

# 11.140.10.25R	Ø140 x 86 – Ø30 mm
8	$12 \times 45 = 540 \text{ mm}^2$ ▼ 46,3 MPa
MAT NY	43,2 cm ²



Observe operating instruction, their safety instructions and local conditions!

# part no.	dimensions [mm] L x B x H	weight [kg]	capacity of skate [daN]	maximum tensile load [daN] with 2 additional support points
dimensions of loaded area [mm]	turning circle D [mm] single skate	stroke [mm]	Running time under full load / charge time [h] with HTS- charger. Fast charger on request.	radio frequency (others on request)
number of wheels	dimensions of wheel, diameter of ball bearing [mm]	area of wheel [mm ²] surface pressure ▼ [N/mm ²]	loaded area per skate [cm ²]	MAT wheel material layer, core: AL aluminium, NY nylon, PU polyurethane, ST steel
maximum speed [km/h]	required friction coefficient drive wheel / floor	floor conditions		

POWER-Skate® XL PSX 20-40 DUO

Load Moving Skate, radio-controlled, 3-/4-point support

HTS



Technical data traction wheel:



93.000.11.00



Ø140 x 109 mm



2



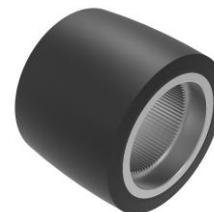
19 x 100 = 1900 mm²
▼ 10,5 MPa



MAT PU 85 Shore A, ST



38 cm²



Possible combination:

1	PSX 20-40 DUO (10.204.55.30)	RFXN20 * (10.200.03.41)
2	PSX 20-40 DUO (10.204.55.30)	RFXN20 (2x) * (10.200.03.41)

Fix load at every support point against shift of load when using a 4-point load moving system.

Attention: Do not overload a skate because of an uneven floor!

Single operation:

1	PSX 20-40 DUO (only one skate) (10.204.55.30)	XN20S-B * (10.200.55.20)

* Not included in delivery.

Observe operating instruction, their safety instructions and local conditions!

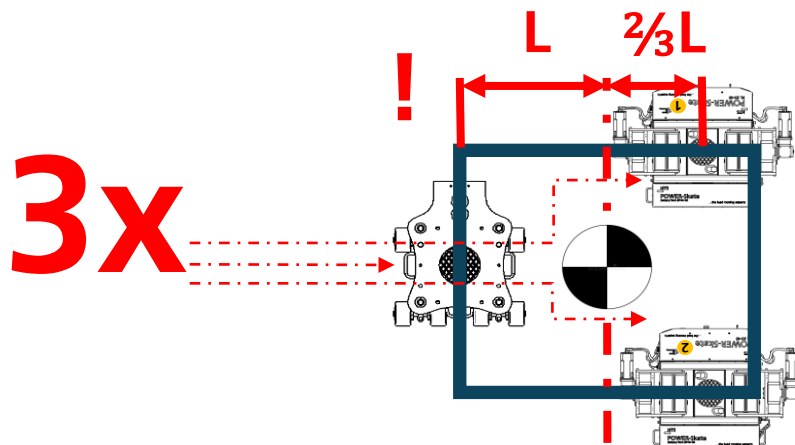
#	part no.	dimensions [mm] L x B x H	weight [kg]	capacity of skate [daN]	maximum tensile load [daN] with 2 additional support points
	dimensions of loaded area [mm]	turning circle D [mm] single skate	stroke [mm]	Running time under full load / charge time [h] with HTS- charger. Fast charger on request.	radio frequency (others on request)
	number of wheels	dimensions of wheel, diameter of ball bearing [mm]	area of wheel [mm ²] surface pressure ▼ [N/mm ²]	loaded area per skate [cm ²]	MAT wheel material layer, core: AL aluminium, NY nylon, PU polyurethane, ST steel
	maximum speed [km/h]	required friction coefficient drive wheel / floor	floor conditions		

POWER-Skate® XL PSX 20-40 DUO

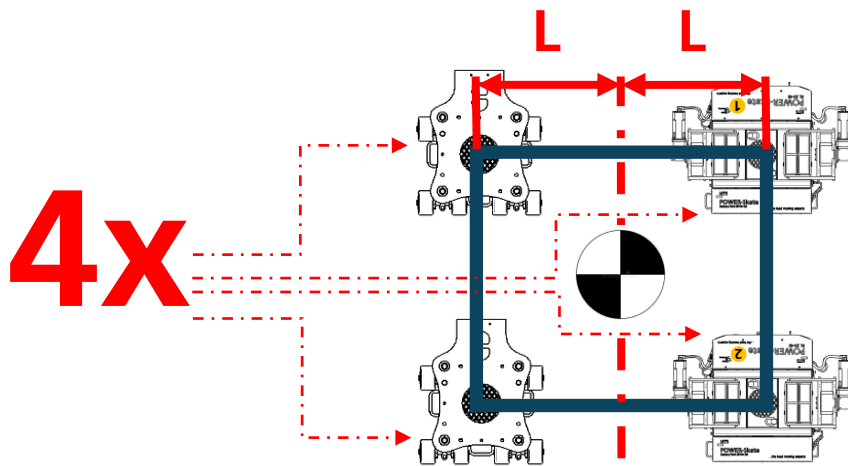
Load Moving Skate, radio-controlled, 3-/4-point support

HTS

Load distribution:



skates	max. single capacity	max. total capacity
PSX 20-40 DUO + RFXN20	20t + 20t + 20t	60t



skates	max. single capacity	max. total capacity
PSX 20-40 DUO + RFXN20 + RFXN20	20t + 20t + 20t + 20t	80t

Fix load at every support point against shift of load when using a 4-point load moving system.
Attention: Do not overload a skate because of an uneven floor!

Observe operating instruction, their safety instructions and local conditions!

#	part no.	dimensions [mm] L x B x H	weight [kg]	capacity of skate [daN]	maximum tensile load [daN] with 2 additional support points
Ø	dimensions of loaded area [mm]	turning circle D [mm] single skate	stroke [mm]	Running time under full load / charge time [h] with HTS- charger. Fast charger on request.	radio frequency (others on request)
#	number of wheels	dimensions of wheel, diameter of ball bearing [mm]	area of wheel [mm²] surface pressure ▼ [N/mm²]	loaded area per skate [cm²]	MAT wheel material layer, core: AL aluminium, NY nylon, PU polyurethane, ST steel
0,5	maximum speed [km/h]	required friction coefficient drive wheel / floor	floor conditions		