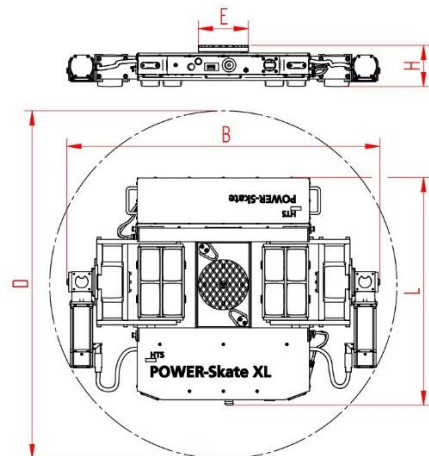


POWER-Skate® XL PSX 20-40

Load Moving Skate, radio-controlled, 3-point support

HTS



Description:

Battery-operated, radio remote-controlled heavy-duty load moving skate for professional, in-house transport of heavy goods on clean and even floor. With the single-joystick remote control every movement is proportionally and exactly executed. Equipped with LiFePo4 battery, remote control, chargers, turn table with an anti-slip pad, high-quality HTS nylon load wheels and polyurethane traction wheels. They are abrasion-resistant, non-marking and cut-resistant as well as suitable for all smooth floors. Combined with a rear S-skate or two bolted ROTOflex skates of the same height these skates form a safe overall 3-point load moving system. The capacity of the skates has to correspond to the load of the POWER-Skate.

Technical data skate:

# 10.204.55.10	L x B x H 1003 x 1379 x 180 mm	Ø 220 mm
251 kg	20000 daN	40000 daN
D 1545 mm	4 h / 4,5 h	2,4 GHz
$v_{max} = 0,5 \text{ km/h}$	$\mu \geq 0,3$	according to DIN 18202 table 3, line 3

Technical data load wheel:

# 11.140.10.25R	140 x 86 – Ø30 mm
8	12 x 45 = 540 mm ² ▼ 46,3 MPa
MAT NY	43,2 cm ²



Observe operating instruction, their safety instructions and local conditions!

# part no.	dimensions [mm] L x B x H	weight [kg]	capacity of skate [daN]	maximum tensile load [daN] with 2 additional support points
dimensions of loaded area [mm]	turning circle D [mm] single skate	Running time under full load / charge time [h] with HTS- charger. Fast charger on request.	radio frequency (others on request)	
number of wheels	dimensions of wheel, diameter of ball bearing [mm]	area of wheel [mm ²] surface pressure ▼ [N/mm ²]	loaded area per skate [cm ²]	MAT wheel material layer, core: AL aluminium, NY nylon, PU polyurethane, ST steel
maximum speed [km/h]	required friction coefficient drive wheel / floor	floor conditions		

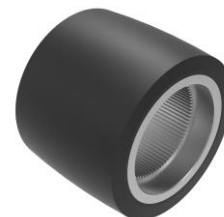
POWER-Skate® XL PSX 20-40

Load Moving Skate, radio-controlled, 3-point support



Technical data traction wheel:

# 93.000.11.00	Ø140 x 109 mm
# 2	19 x 100 = 1900 mm² ▼ 10,5 MPa
MAT PU 85 Shore A, ST	38 cm²



Possible combination:

	PSX 20-40 (10.204.55.10)	XN20S-B * (10.200.55.20)
1		

* Not included in delivery.

Observe operating instruction, their safety instructions and local conditions!

# part no.	dimensions [mm] L x B x H	weight [kg]	capacity of skate [daN]	maximum tensile load [daN] with 2 additional support points
dimensions of loaded area [mm]	turning circle D [mm] single skate	Running time under full load / charge time [h] with HTS- charger. Fast charger on request.	radio frequency (others on request)	
# number of wheels	dimensions of wheel, diameter of ball bearing [mm]	area of wheel [mm²] surface pressure ▼ [N/mm²]	loaded area per skate [cm²]	MAT wheel material layer, core: AL aluminium, NY nylon, PU polyurethane, ST steel
0,5 maximum speed [km/h]	required friction coefficient drive wheel / floor	floor conditions		